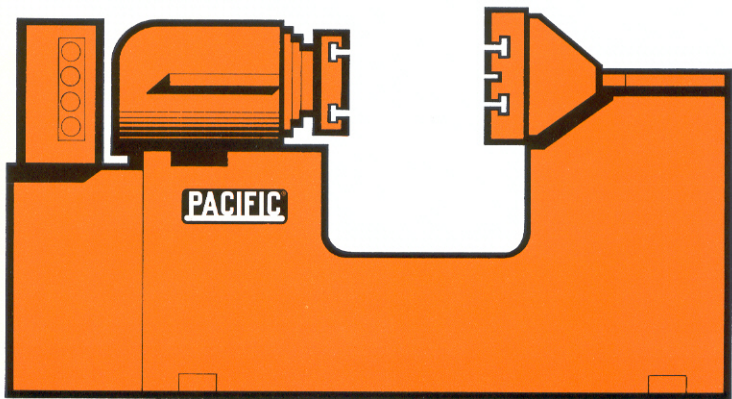


Ramdozer



PACIFIC

PACIFIC HYDRAULIC RAMDOZER

For Metal Workers In All Industries Who Are Faced With Straightening Problems

The Ramdozer is ideally suited to bar, shaft, and plate straightening and, in addition, may be fitted with a number of tools to perform such work as bar, angle and channel cut-off, rail and structural contouring and straightening and numerous other jobs where the horizontal configuration and smooth, long stroke hydraulic power are assets.

Throat depth modifications are offered up to 48", allowing plate straightening capabilities not available on vertical configuration machines. The cost savings, to the user, in material handling time alone, can justify the cost of the Ramdozer.

The Ramdozer hydraulic system protects itself against overloads, and is offered with the two speed system as standard. The ram advances to the work in the "rapid advance" mode then automatically shifts to a slow pressing speed (at full tonnage) to accomplish the work. A fully adjustable cam and switch allows the operator to alter the position of the speed change at will.

The stroke is infinitely adjustable (within its range) to reduce the non-productive portion of the working stroke. When the ram reaches the stroke limit switch setting, it automatically returns to the rear position.

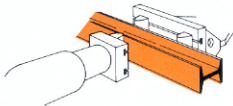
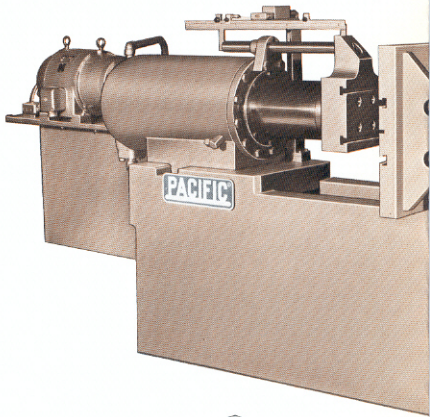
A removable T-slotted tool holder provides the means to attach various tools, such as, straightening or die blocks, to the ram. Heavy rolled steel interlocked plate construction ensures long life to the frame and hydraulic packings.

The Ramdozer is furnished with a foot pedal on a long flexible cord which may be hand held. When fully depressed the ram moves forward. At the mid-position of the pedal, the ram stops. When the pedal is released, the ram automatically returns to its rear position.

Various control and structural modifications are offered at extra cost such as:

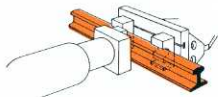
- Deeper throats up to 48".
- Longer strokes up to 30".
- Increased open dimensions.
- Variable Pressing Speed.
- Tonnage control and indication.
- Piston Rod Boots.

Your Pacific dealer can supply information and quotations on the Ramdozer with extras as well as other Pacific Hydraulic Presses, Press Brakes and Shears.



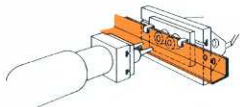
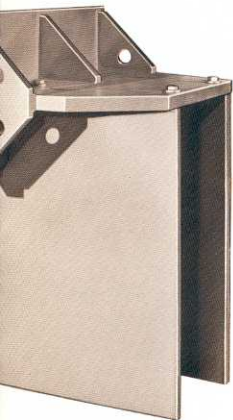
STRUCTURAL STRAIGHTENING AND CONTOURING

Either the "eye-ball" method, or straightening to a pre-selected limit position is fast and easy on the Ramdozer. Adjustable die blocks may be mounted on the end lug and tool holder for straightening as well as precise contouring. Structural members may be fed in on rollers or held by an overhead crane, either way handling is easier because of the horizontal position of the Ramdozer and the horizontal movement of the part being worked on.



RAIL STRAIGHTENING AND CONTOURING

Shaped anvils to fit the contour of the rail permit fast straightening as well as precise contouring. Easy access to the working area minimizes handling time. Scale and dirt drop harmlessly through the housings.



PUNCHING

The Ramdozer is designed for the heavy duty service of punching structurals as well as other demanding jobs of punching commonly found in metal fabrication shops. The extra large area for oil on the bottom of the piston cushions the shock of breakthrough. The horizontal arrangement speeds handling.

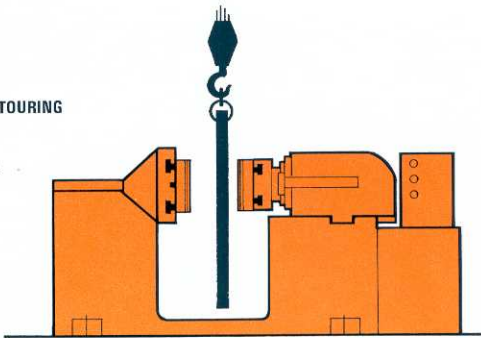
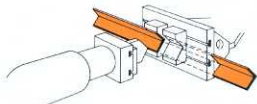


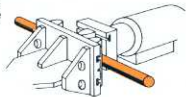
PLATE STRAIGHTENING

Handling plate vertically is vastly more efficient than horizontally. Deep throated horizontal Ramdozers are available to allow straightening to the center of a six foot or eight foot wide plate. The entire operation is speeded up by handling the material vertically and by reason of the precise press controls.



ANGLE BAR AND CHANNEL CUTOFF

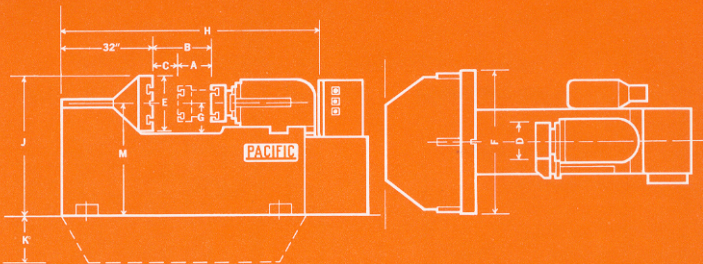
Self-contained tools for these necessary operations are described in a separate Pacific Tooling Catalog. These tools are the double cut type (which produce a slug) that require no holdowns and leave both cut ends distortion free. When used, an end lug slot should be specified on the Ramdozer to allow for slugs.



BAR AND SHAFT STRAIGHTENING

Instant response of the Ramdozer controls assures the operator of complete control of the ram at all times. Limit stop adjustment can be made within .001". Tonnage control is also available as an option.

SPECIFICATIONS



MODEL	TONS	STROKE A	OPEN HEIGHT B	CLOSED HEIGHT C	TOOL HOLDER SIZE D	END LUG SIZE		THROAT DEPTH G	FRAME LENGTH H	FRAME HEIGHT J	FRAME BELOW K	WORKING HEIGHT M
50HPF	50	10"	18"	8"	12" x 12"	18"	36"	10"	6'8"	4'7"	See Note	46"
75HPF	75	10"	18"	8"	12" x 12"	18"	42"	10"	7'0"	5'1"		52"
100HPF	100	12"	20"	8"	12" x 12"	18"	42"	10"	7'5"	5'4"	See Note	55"
150HPF	150	12"	22"	10"	12" x 12"	24"	48"	13"	7'7"	6'8"		12"
200HPF	200	12"	23"	11"	15" x 15"	24"	48"	13"	7'9"	7'1"	17"	56"
250HPF	250	12"	24"	12"	18" x 18"	24"	54"	14"	8'4"	7'3"	19"	56"
300HPF	300	12"	24"	12"	18" x 18"	24"	60"	14"	8'8"	8'10"	38"	56"
375HPF	375	12"	26"	14"	18" x 18"	28"	72"	16"	8'10"	9'1"	41"	56"
500HPF	500	12"	28"	16"	20" x 20"	30"	78"	18"	10'0"	10'4"	56"	56"
750HPF	750	Consult Factory for Specifications and Dimensions										
1000HPF	1000											

NOTES:

1. Frames of large models project below floor level (see dimension K).
2. Motor and hydraulic power unit will extend beyond frame. If overall length is critical consult factory for certified dimensions.
3. Tool holder furnished with two T-slots located each side of centerline.
4. End Lug furnished with $\frac{5}{8}$ " wide x $\frac{7}{8}$ " deep center slot (each direction), and two longitudinal T-slots.
5. Electrical push buttons, selector switches, and stroke-control mounted on right-hand side of press. Stroke length is infinitely adjustable.
6. Consult factory for deeper throats, longer strokes, or other modifications.
7. Specifications and dimensions subject to change without notice.

PACIFIC[®]

write for further information on any Pacific machine

PACIFIC PRESS & SHEAR CORP.

...builders of hydraulic machine tools

848 49th AVE., OAKLAND, CALIF. 94601, PHONE (415) 261-8303

MT. CARMEL, ILL., PHONE (618) 262-8666

Represented by

Licensees: International Machinery Corp., S.A., Sint-Niklaas-Waas, Belgium • Built, sold and serviced in Canada by ANRON Limited